

EXHIBITION TIMELINE

Curator:

Exhibition Dates:

Budget:

Timeline

Dates	Deliverable
1-2 weeks after acceptance	Due: Curators Contract Signed
6 months out from opening	Due: Exhibition title, Exhibition Abstract (150 words), Curator's bio and picture, Artist selection process confirmed (open call or direct selection)
6 months out	Exhibition + Curator announced, website posted
(optional) 5 months out	Open call launched / Artist selection + research begins
4 months out	Site Visit (optional)
4 months out	Artists Confirmed
3 months out	Due: List of Curator's desired/recommended programs Schedule: Meeting with Josiah to discuss
3 months out	Due: Full Statement, Artist Bios + Contact Information, Work list with all proposed selections and artwork details (artist, title, medium (length, if audio/video), dimensions, available images, and any other pertinent details

3 months out	Artist participation/invitation emails sent from Stove Works and Curator
3 months out	All exhibition text finalized, including press releases and website
3 months out	Due: Transportation methods for artwork confirmed
3 months out	Stove Works sends contracts to Artists. Curator is responsible for filling out a Stove Works spreadsheet containing relevant Artist information for use in contracts.
9 weeks out	Due: Programs finalized, dates, descriptions, and any other pertinent information
2 months out	Due: Exhibition Layout and necessary build out finalized. No major changes to design can be made after this date.
2 months out	Shipping dates confirmed
Up to a month out	Residency Starts (optional) Space will be held for a 1-3 month residency. If you participate in the residency program it is required to be in residency the month of the exhibition opening.
3 weeks out	Work begins to arrive on-site
3 weeks out	Install: Space Buildout
2 weeks out	Last day for arrival of works, unless the Artist is installing their work or other plans have been made
1-2 weeks out	Install: Works
Week of	Lights set / Space Cleaned

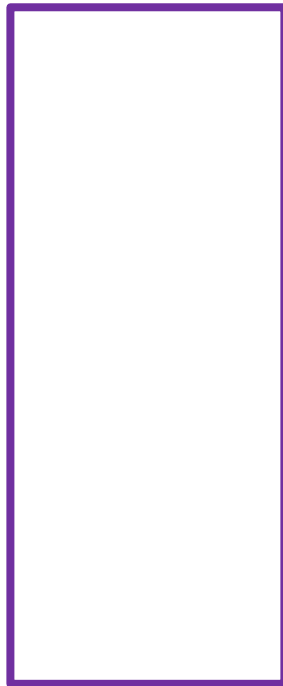
	Exhibition Dates
	Exhibition Opening
TBD	Artist / Curator Panel Discussion
	Closing
Notes	<p>Curator and Stove Works agree to use WAGE floor fees as the base for artist fee negotiations.</p> <p>All of Stove Works' programming is free and open to the public. The no admission fee policy ensures that people who are of limited financial resources can still participate in the exhibitions and related programs.</p>
Contact Information	<p>Director: Charlotte Caldwell, 615-440-8164, charlotte@stoveworks.org</p> <p>Director of Exhibitions: Caroline Gikas, 225-287-9705, caroline@stoveworks.org</p> <p>Programs Director: Josiah Golson, 423-255-6855, josiah@stoveworks.org</p> <p>Project Manager, Clay Aldridge, 865-748-3735, clay@stoveworks.org</p>

Guest
Curator



Exhibition Agreement

ADDENDUM B

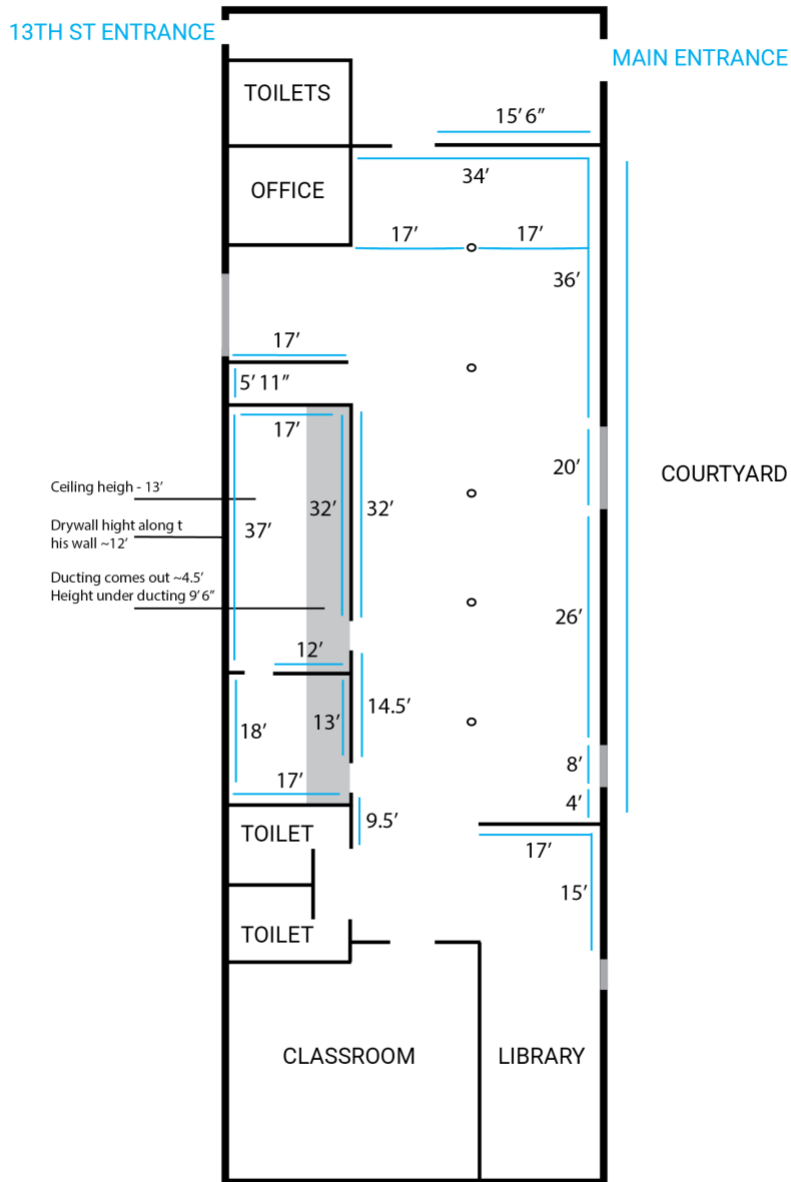


Guest Curator



Exhibition Agreement

1250 E 13TH ST.



1226 E 14TH ST

ADDENDUM C

W.A.G.E FLOOR MINIMUMS

Below are the rates of pay for organizations with Total Annual Operating Expenses (TAOE) of \$500,000 or less, as well as the terms of engagement where applicable. Institutions with TAOE above \$500,000 should refer to the [Fee Calculator](#). Rates for these institutions are calculated as a fixed percentage of their TAOE.

1. Solo Exhibition

\$1000

2. Solo Project

\$600

3. 2-Person Exhibition

\$500/Artist

4. Group Exhibition, 3 - 5 Artists

\$250/Artist

5. Group Exhibition, 6+ Artists

\$150/Artist

6. Traveling Exhibition

Participating artists receive a standard full W.A.G.E. fee for the first iteration of the exhibition, paid by the originating venue. In subsequent iterations, each fee is paid by the host institution and treated as an 'Exhibition Fee'. An Exhibition Fee is 50% of the standard full fee. For example, if a host institution's TAOE is \$500,000 or less, the fee for a Group Exhibition with 6+ Artists would be a minimum of \$75 per artist, or 50% of \$150. If an artist is required to install their work each time the exhibition is mounted, the host institution must pay the artist using the Day Rate for Performers category in this schedule, in addition to covering travel and accommodation expenses. Please note this category is not included in the Fee Calculator.

7. Performance of Existing Work

\$300

8. Performance, Commission of New Work

\$600

9. Solo Screening with In-Person Appearance

\$100

If an artist self-distributes their work, rates are negotiated between artist and institution. W.A.G.E. recommends a minimum rental fee of \$250 per feature and \$75 per short film. The continuous screening of a film or video in an exhibition is covered under the exhibition categories listed above. In the case of both single and continuous screening in an exhibition context, institutions are not required to pay an artist fee if a fee is paid to a distributor.

10. Event with Presentations or Performances by 2 or More Participants

\$100 (Revised category 09/18)

11. Talk, Discussion, or Workshop with 2 or More Participants

\$100 (Revised category 09/18)

12. Existing Talk, Presentation or Reading

\$100 (Revised category and price 09/18)

An Artist Talk in conjunction with an exhibition is considered additional content and must be compensated separately. An exhibition walk-through or video interview may be included as content provided by the artist as part of the program, but it must be negotiated as such with the contracting institution and acknowledged as labor. In larger institutions where different departments may work with an artist to produce different content for the same program, it is the responsibility of the institution to coordinate between departments and produce a single cohesive contract agreement. For smaller institutions, all content being produced for the program should be itemized and agreed upon by both artist and institution.

13. Commissioned Talk or Presentation

\$150 (Revised category and price 09/18)

14. Existing Text for Publication

\$50 or \$0.025/word

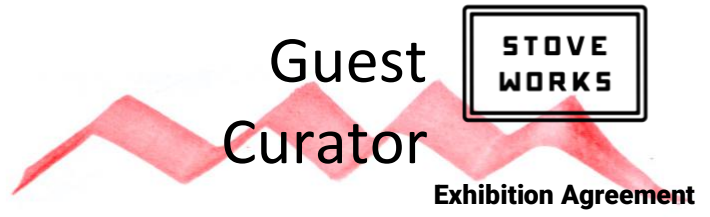
15. Commissioned Text for Publication

\$0.25/word

16. Day Rate for Performers

\$25/hour or \$125/day, whichever is higher

Day Rate for Performers at institutions with operating expenses up to \$5,000,000 is \$25/hour or \$125/day, whichever is higher. **Day Rate for Performers at institutions with operating expenses over \$5,000,000 is \$50/hr or \$200/day, whichever is higher.** In some cases this category may also be used to contract other forms of temporary waged labor not covered by this schedule. Fee offer must be articulated to applicants at time of



audition/interview and Performers must receive a contract for review a minimum of 5 business days before signing and returning. If the contracted work takes place over a period of more than 30 days, Performers must be hired as Temporary Employees and not Independent Contractors.

Guest Curator



Exhibition Agreement

ADDENDUM D

THRIVE REGIONAL PARTNERSHIP

